

Nokia Customer Care

5 - Disassembly Instructions

This page has been intentionally left blank.

Table of Contents

	Page No
Disassembly Instructions.....	5
General requirements	5
Detailed disassembly instructions	6
Dome Sheet Placement	11
Cleaning	11
Placing the dome sheet to the light guide	11
Placing the light guide assembly onto the PWB	13
Reassembly	14

This page has been intentionally left blank.

Disassembly Instructions

■ General requirements

Use the correct ESD protection before handling the RM-30 product.

Use gloves to handle the RM-30 product.

Required tools:

- torx 6 screwdriver, for disassembly
- torx 6 torque-driver, set to 28Ncm torque for reassembly
- slotted screwdriver
- tweezers
- SS-42 camera removal tool
- SRT-6 opening tool
- DC-plug

Note: When shielding lids are removed from the shielding frames of the PWB, new lids must be used in order to close the shielding properly. It is not allowed to re-use the removed ones.

■ Detailed disassembly instructions



Needed tools for disassembly.



Protect the window with a plastic film.



Remove the C-cover and protect the camera window.



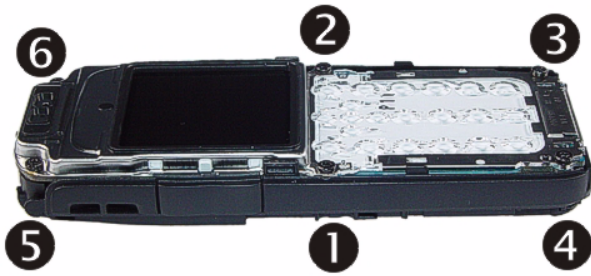
Unlock the side snaps with SRT-6 when opening the A-cover.



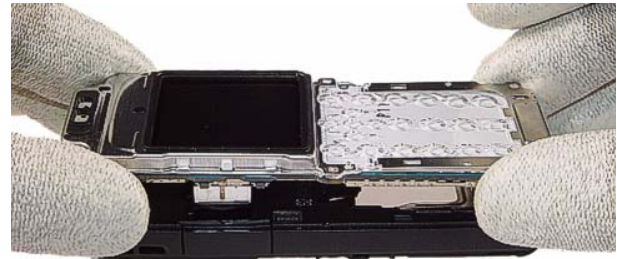
Also protect the inner side of the window with a protective film.



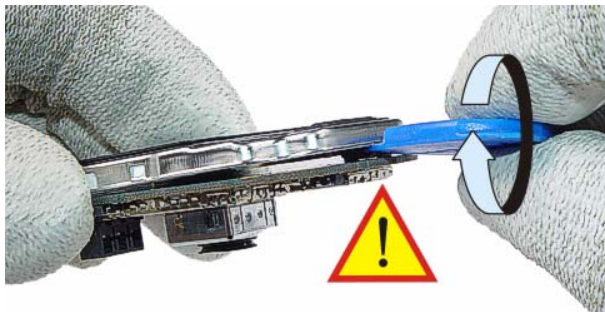
Remove the keymat.



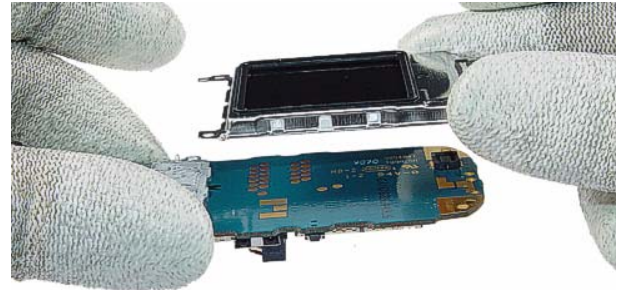
Unscrew the six Torx Plus® size 6 screws. For assembly, the reverse order and a Torx Plus® driver with a torque of 28Ncm has to be used.



Take the engine module from the B-cover.



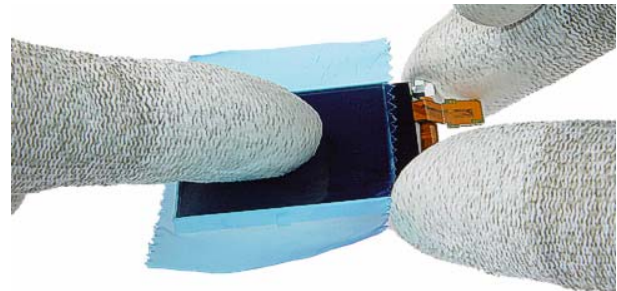
Carefully open the LCD connector. Do not damage the LCD connector.



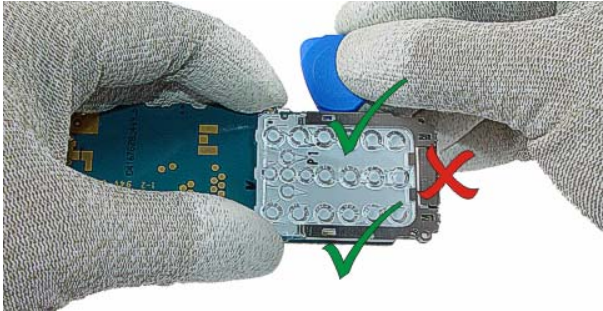
Remove the UI shield assy with the LCD module.



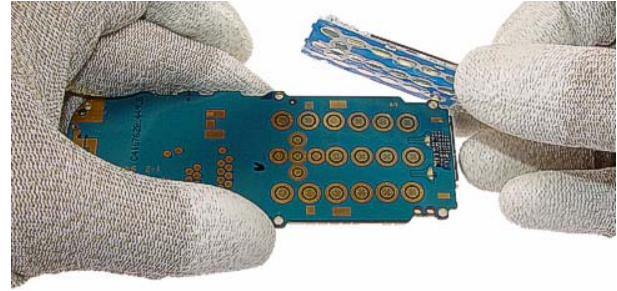
Lever out the LDC module from the UI shield.



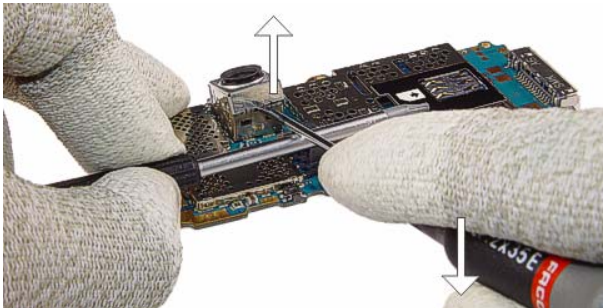
Protect the LCD Module with a protective film.



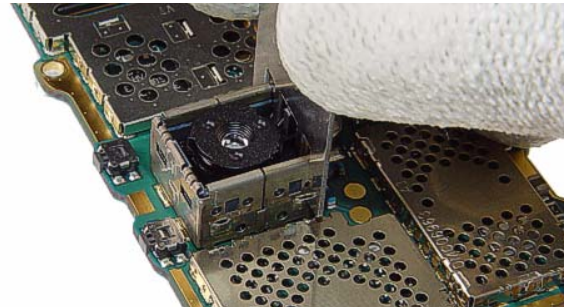
Separate the light guide assy from the engine module. Do not use the SRT-6 on the right side to avoid damaging underneath components.



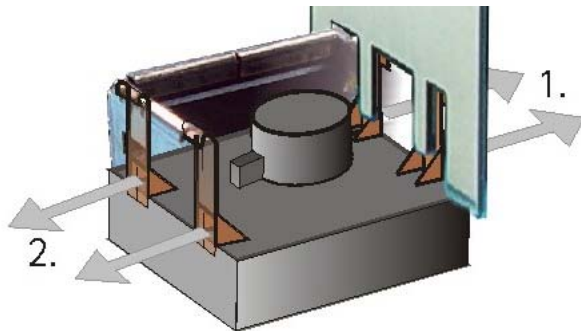
Now, take away the light guide assy.



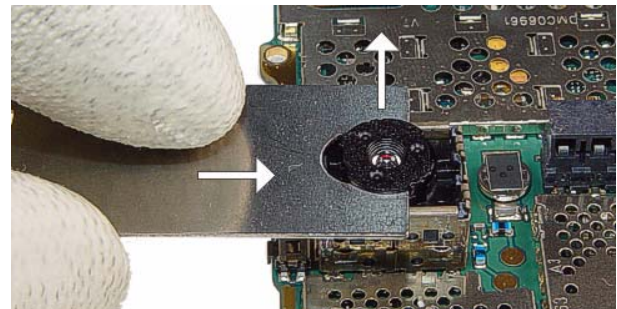
Use a slotted screwdriver as a lever to open the camera shield.



Use the SS-42 to unlock the camera module carefully. Note the guide pin when assembling.



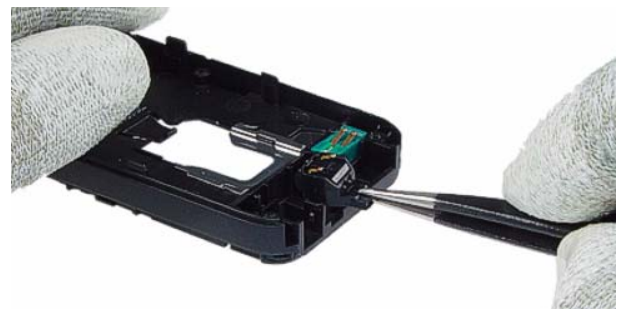
Place the removal tool as shown and unlock the snaps on both sides.



Shift the SS-42 over the camera module and pull it up.



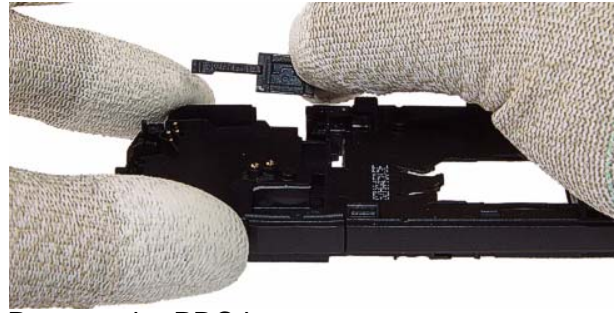
Remove the DC-jack with a DC-plug.



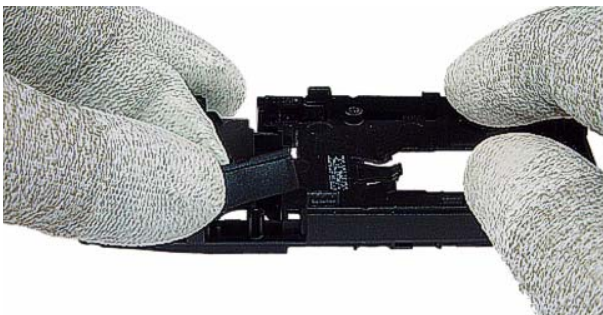
Remove the microphone with tweezers.



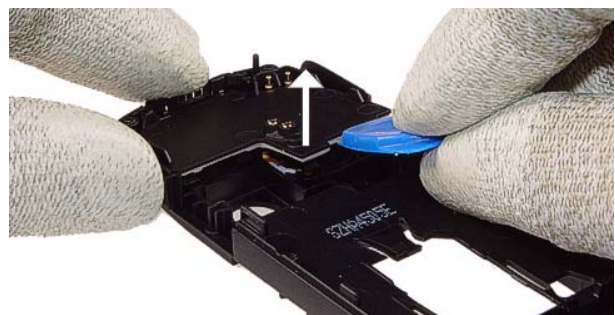
Lever out the vibra motor.



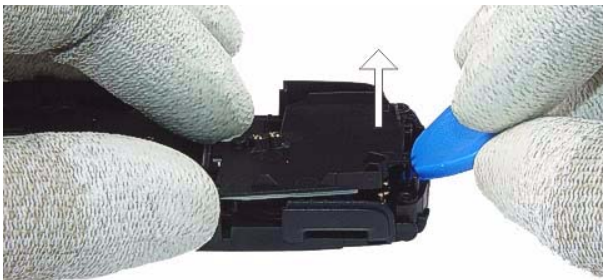
Remove the PDC key.



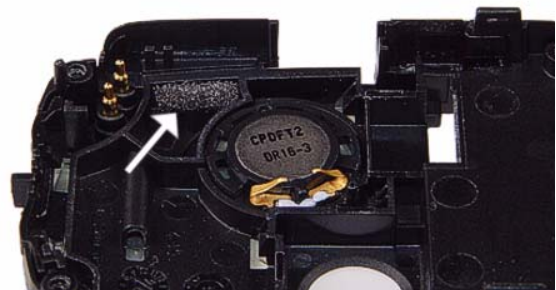
Remove the volume key.



First unlock this side of the IHF lid with SRT-6.



Now, unlock the other side and remove the IHF lid.



Note that the IHF net stays in place during disassembly.



Release the IHF speaker carefully with a slot-headed screwdriver. Always use a new speaker adhesive when assembling.

Note: It is not possible to disassemble the power actuator without damaging it. The power actuator is the same material as B-cover.

Note: If a new B-cover is used, a torque setting of 28Ncm and speed in the range of 400 - 600 rpm is required to cut the new thread.

Caution: The display connector is fragile. Movement of the display module/UI shield assembly can damage the solder joints of connector on the display module or phone PWB. Ensure it is held in place during unscrewing and screwing.

Dome Sheet Placement

Since the dome sheet has to be removed before every soldering process a new dome sheet needs to be placed between the PWM and light guide.

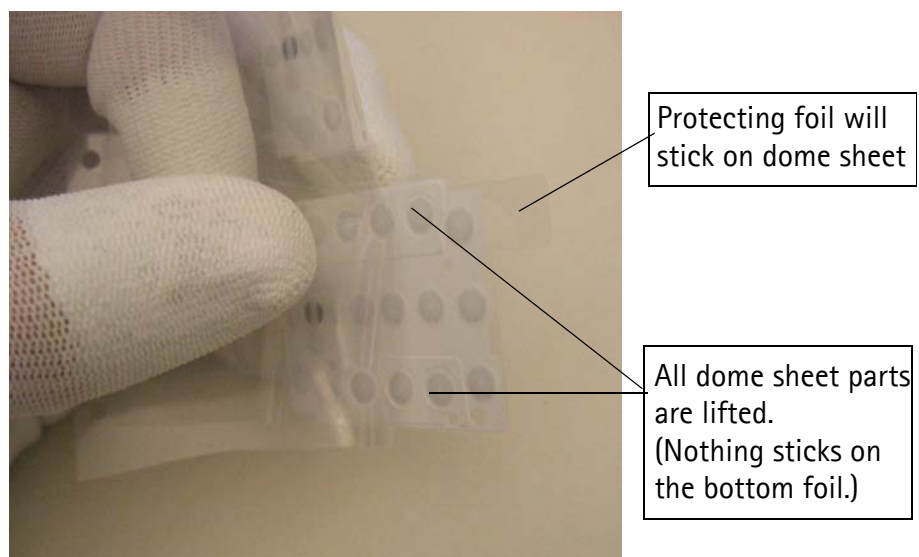
Note: In some regions the light guide assembly (which includes the light guide, the metal frame and the domesheet) will be replaced as one part (this is the preferred procedure). The description below is needed, when the domesheet needs to be replaced separately, which is not the preferred procedure.

■ Cleaning

The PWB needs to be cleaned and all remaining material from the old dome sheet needs to be removed. In some regions there is the possibility to exchange the dome sheet separately (not together with the light guide assembly), then the light guide needs to be cleaned as well.

■ Placing the dome sheet to the light guide

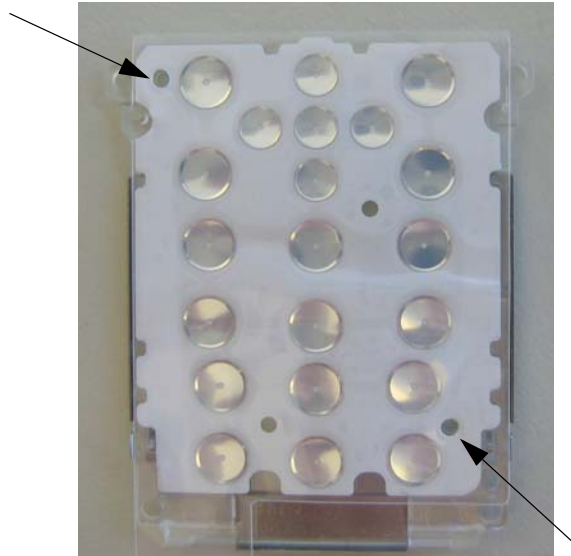
The dome sheet is delivered on transparency foil. First step is to remove the dome sheet from the foil, where you need to ensure that the complete dome sheet is lifted and the protecting foil on the other side of the dome sheet still sticks on the dome sheet. Please see picture below:



Place the dome sheet onto the cleaned light guide and press them firmly together.



Take care, that the holes of the domesheet align exactly with the holes on the light-guide.



■ Placing the light guide assembly onto the PWB

In some regions there is the possibility to order the light guide assembly including the dome sheet. In any case the protecting foil needs to be carefully removed from the dome sheet.



Then place the assembly to the PWB and press it firmly together.



Note: It is very important to press the light guide assembly and the PWB properly together at any point. If some points are not pressed properly together dust and humidity will sneak between PWB and dome sheet and will cause corrosion, which lead usability problems and to a defect which might lead to a total loss of the phone.

Now you can be continue with the assembly procedure.

Reassembly

Reassembly should be in reverse order to disassembly unless otherwise stated.